

# GLASSO

**INSPECTING EVERYTHING IN GLASS**

# ABOUT GRIDBOTS

We are a Technology company from India and work in the field of Robotics - Artificial Intelligence and Machine Vision. Founded in August 2007 by young and passionate innovator Mr. Pulkit Gaur [TED Fellow and MIT Young Innovator of the year]. We today are a team of more than 50 people- Head quartered in Ahmedabad and having offices in Pune and Delhi.

We design and develop ultra high performance systems which are used in the industry for defect detection - dimension measurement - sorting applications - grading application and many other ways. With our machine vision and robotic solutions we are helping our clients achieve digital factory goals in a time bound manner.

We would be glad to hear about your industry 4.0 adaptation strategy and would love to get in touch with you to explore the synergies in working together !

## NO.1

Market Share In Solar Glass Inspection in India

## 12+

Glass Projects Completed

## 10+

Research Team

## 200+

Components Used per Machine



# GLOBAL PRESENCE



01

ROBOTRIK SYSTEMS.  
CANADA

02

DIGITAL OCEANIC.  
SF

03

DAIT COMPANY.  
RUSSIA

04

ATM.  
DAMMAN

05

ZARP LABS.  
INDIA

06

SIGNET SYSTEMS.  
AUSTRALIA

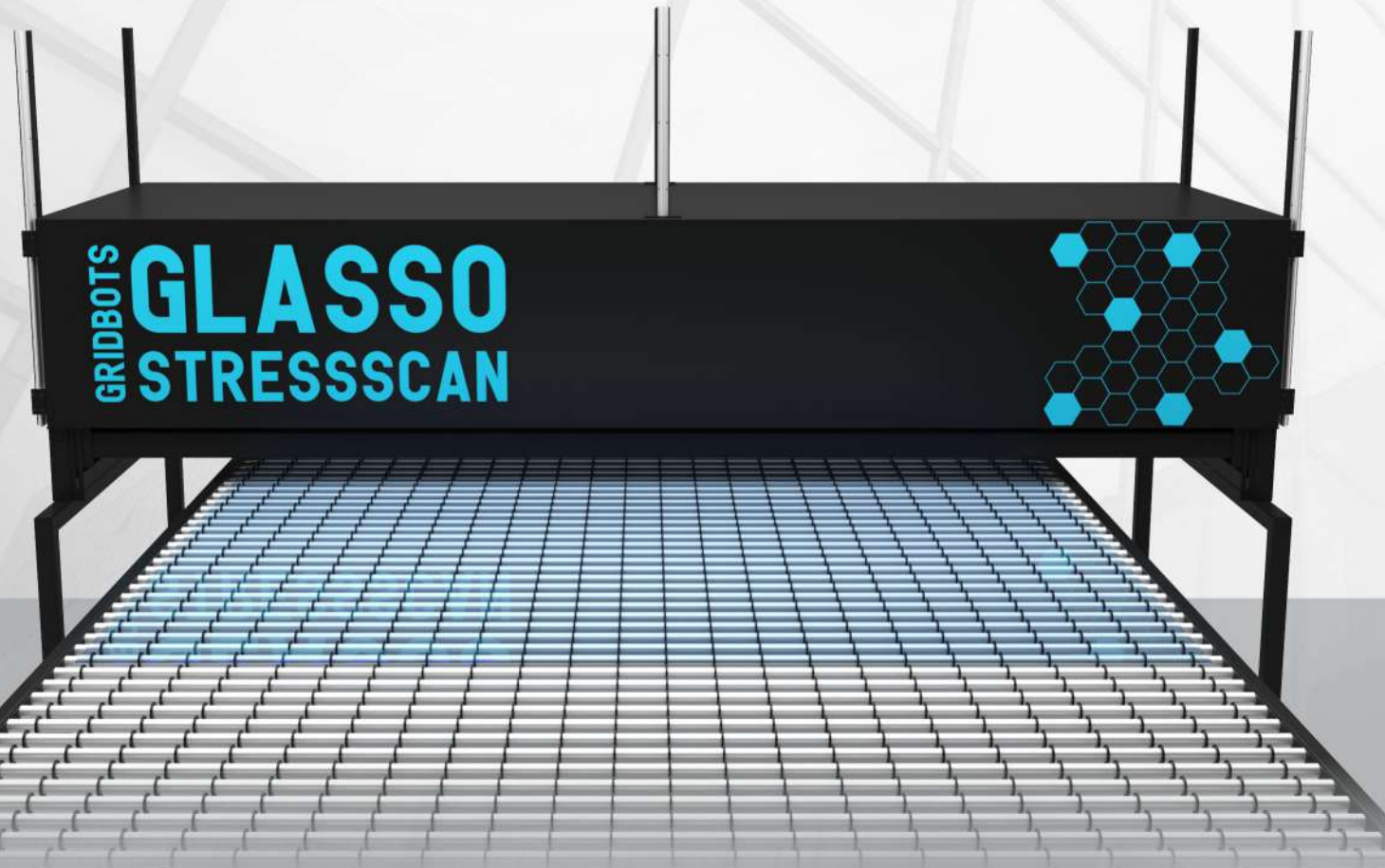
07

ENCODE SYSTEMS.  
SINGAPORE

# GLASSO STRESSSCAN

TEMPERED AND ANNEALED GLASS  
STRESS MEASUREMENT SYSTEM

THE INDUSTRY STANDARD  
FOR STRESS INSPECTION

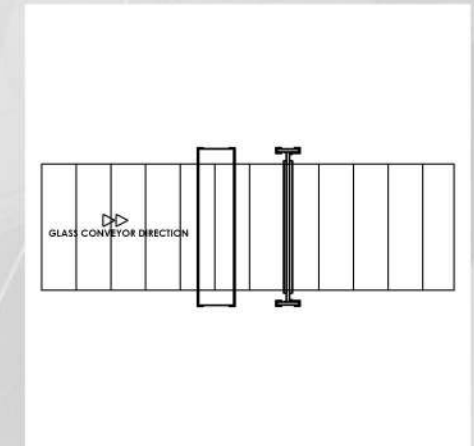
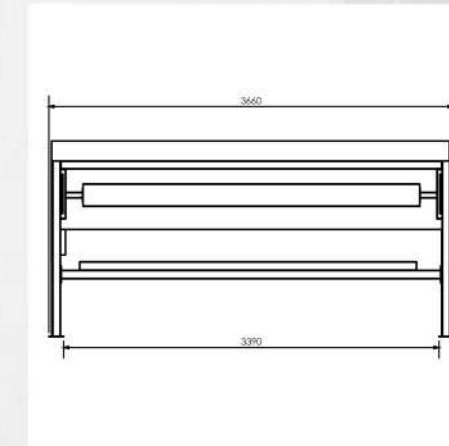
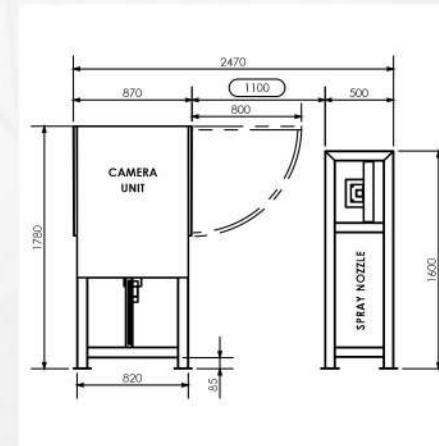
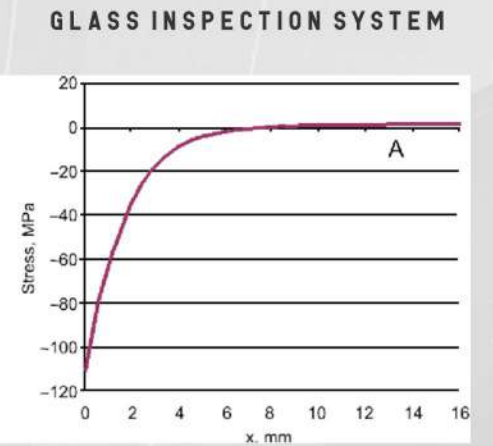
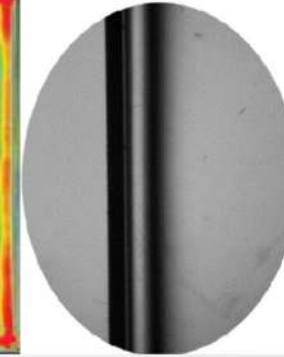
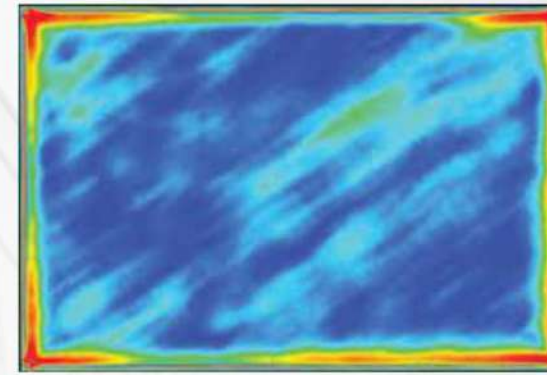


Gridbots Glasso - STRESSSCAN is a state of art inspection system for the stress glass ribbons and sheets of any width and running at a speed of upto 36 Meters/Minute. The system can detect the various types of defects found in the float glass like blisters, stones, scratches, inclusions and knots.

The system can interface with any existing glass line and can provide data to the cut optimisers.

The principle of detection of defects is based on multiple reflection, refraction and transmission pictures captured during the glass pass through and then analysed with ultra high speed algorithms which can utilise the prior knowledge of data and patterns to detect and classify the defects in the glass ribbons.

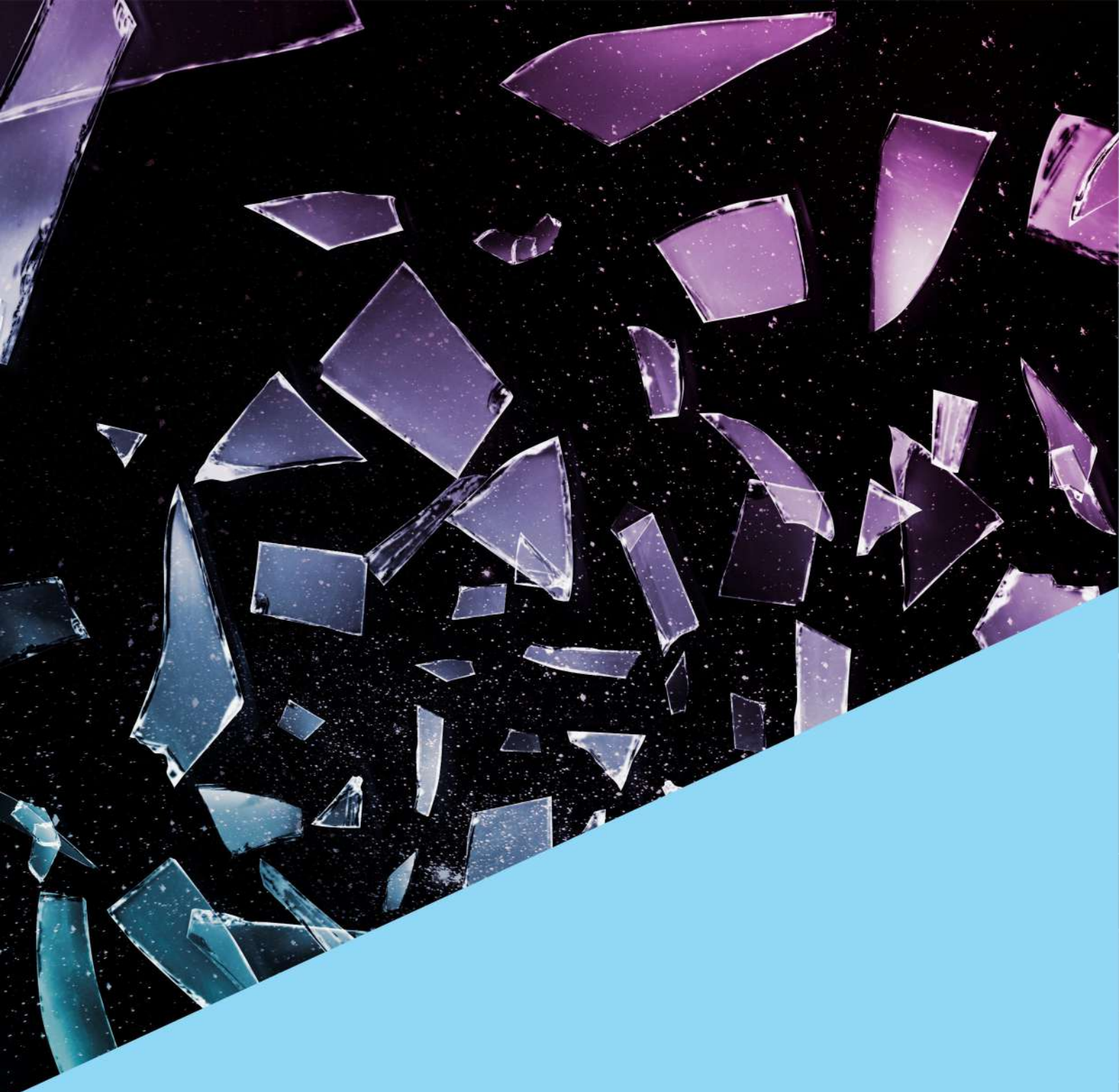
The system comprises of 10 or more area scan cameras which are directly connected to individual processing units for minimal delays.



## SPECIFICATIONS

Measurement Resolution	Stress values are also provided in 0.1 Mpa
Compatibility	Solar Glass, Float Glass, Low E Glass, Patterned Glass, Tinned and Dark Glasses
Production Line Compatibility	All Glass production and Tempering Lines.
Scalability /Width / Speed Limitation	Scalable With the speed and width of Glass line
Rugged System	Low maintenance optical - Non Contact System
Compute System	High End Compute System with GPU based real time computation
Easy of Use	Multilingual Intuitive and easy to user interface
Visualisation	Data visualisation in real time with 3D maps
Easy integration	Compatibility with more than 99% Glass/ Tempering Lines
Control System + HMI	21" Touch Screen with x64 Architecture
System Controllers	GPU, Multicore systems and FPGA's used
Lights	Multispectral LED Lights
Operating Environment	Non Clean Room, Non-Condensing
Operating Temperature	0-60 degrees
Remote Control and Reprting [ IOT ]	Remote login & Maintenance - IOT based control and analytics

THE KEY TO SUCCESS AND HIGHEST PRODUCTIVITY



**GRIDBOTS TECHNOLOGIES PVT. LTD.**

**Main Office Address**

Office #306, Maharana Pratap Complex,  
Behind V.S. Hospital, Ashram Road,  
Ahmedabad - 380006, Gujarat, India.

---

**Factory Address**

59, MahaGujarat Industrial Estate,  
Behind Surbhi Dining Hall, Sarkhej Bavla Road,  
Moraiya, Ahmedabad - 382213, Gujarat, India.

**Contact**

M. : +919924826584

Email Id : [contact@gridbots.com](mailto:contact@gridbots.com)

Website : [www.gridbots.com](http://www.gridbots.com)

